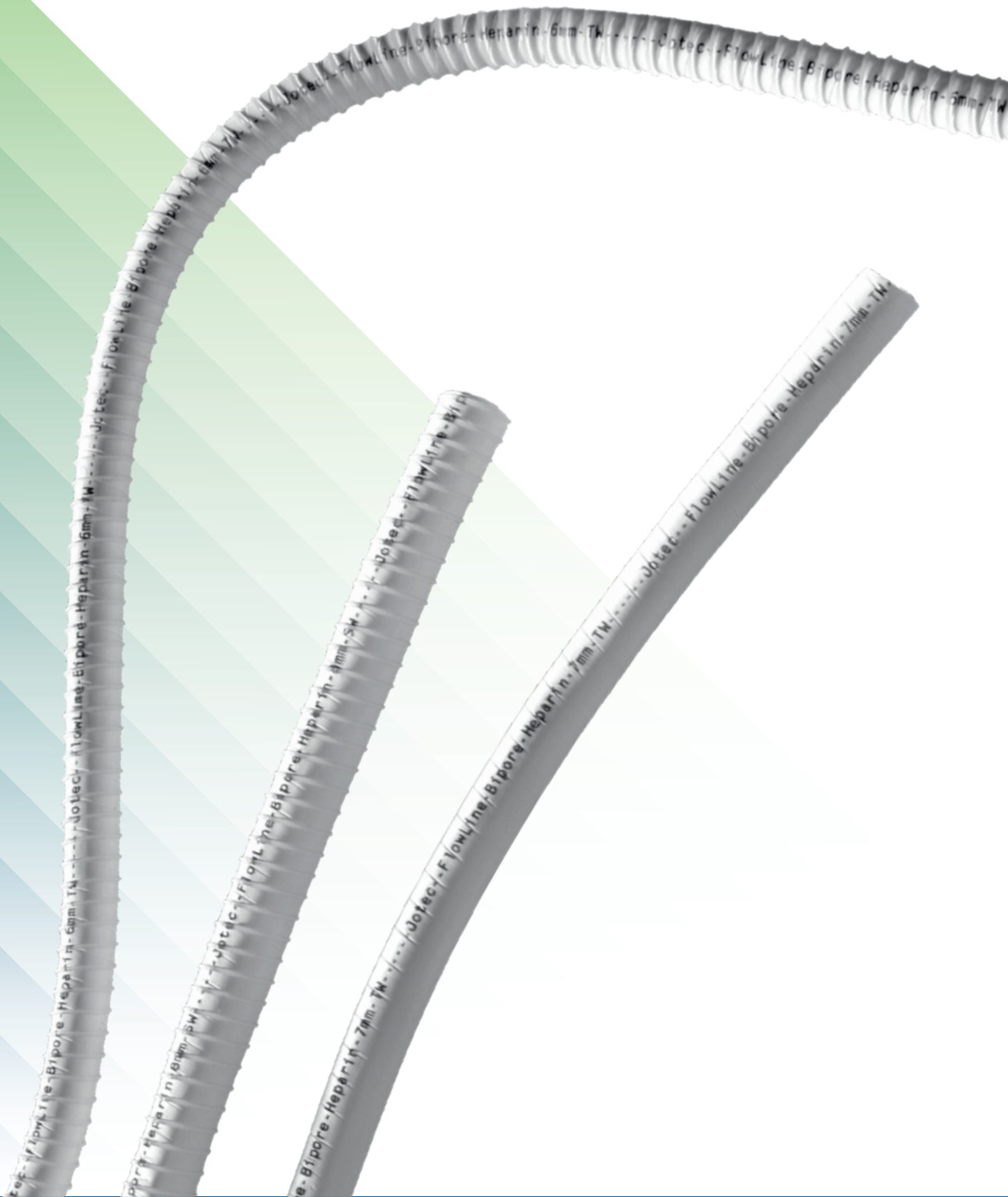


ePTFE Vascular Graft with Heparin Coating



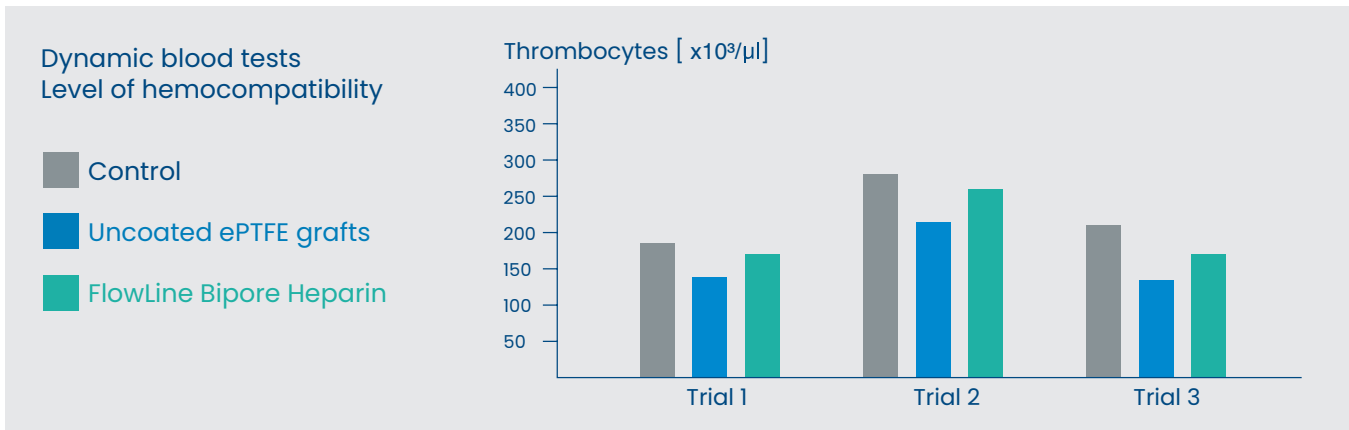
ARTIVION

FlowLine Bipore Heparin

FlowLine Bipore Heparin

Thromboresistant lumen surface for increased graft patency

Covalent bonding and ionic interactions binds Heparin durable to the lumen surface of the FlowLine Bipore Heparin graft. This innovative bonding technique imitates the antithrombogenic effect of the natural endothelium and leads to increased hemocompatibility.

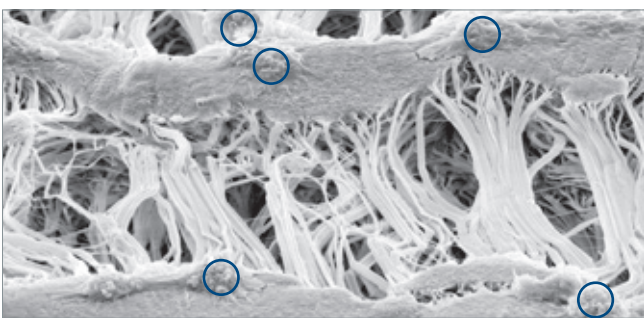


Dynamic blood tests confirm high level of hemocompatibility¹

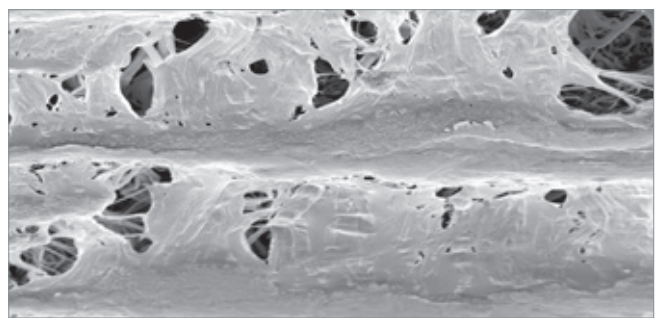
The number of free thrombocytes in blood being exposed to the lumen of FlowLine Bipore Heparin is comparable to the control group.

In uncoated ePTFE grafts there is a decrease in the number of free platelets due to thrombus formation on the lumen surface.

The microscopic image clearly illustrates the advantage of the FlowLine Bipore Heparin grafts over uncoated ePTFE grafts.

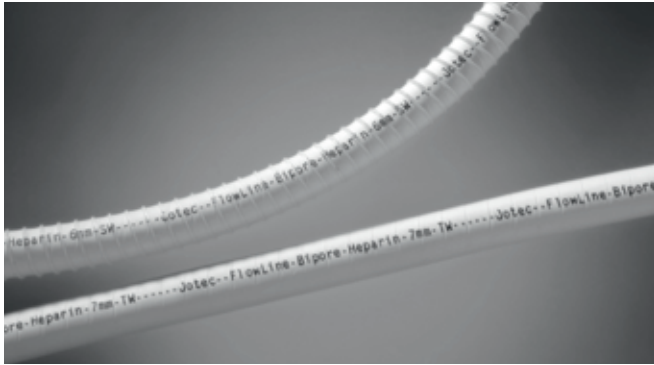


Uncoated ePTFE graft:
Thrombus formation after 2 hours of blood contact¹



FlowLine Bipore Heparin:
Significantly reduced platelet adhesion¹

¹ In vitro studies / dynamic blood test in Chandler Loop by Dr. H.P. Wendel:
Clinical Research Laboratory, Clinic for Thoracic, Cardiac and Vascular Surgery, University Hospital Tübingen



Unique guideline indicating graft diameter and wall thickness



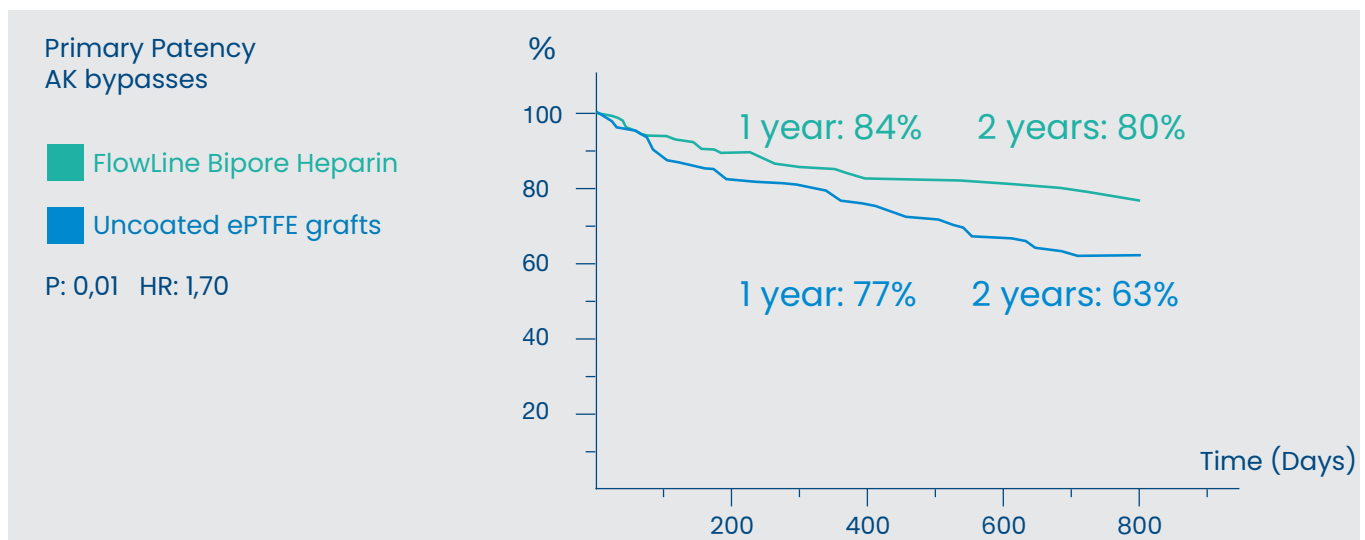
The external reinforcement can easily be removed if required

FlowLine Bipore Heparin provides better patient care

- Excellent and pliable handling and suture behaviour
- Additional ePTFE wrap for enhanced suture retention and high burst strength
- Helical reinforcement ensuring high kinking and compression resistance

The proven alternative with sustained antithrombogenic effect

This results from a prospective, open label, randomised multicentre study comparing FlowLine Bipore Heparin with uncoated ePTFE grafts. More than 500 patients were enrolled and randomised to 6mm, reinforced FlowLine Bipore Heparin and uncoated ePTFE grafts.



„... there is a significant difference [...] in favour of the FlowLine Bipore Heparin grafts.“

Ordering Information

ePTFE Vascular Graft with Heparin Coating

Thin Wall

Thin Wall with
spiral reinforcement

Length (cm)	Diameter (mm)	Catalogue No.	Catalogue No.
40	5	15TW4005N	15TW4005S
50	6	15TW5006N	15TW5006S
50	7	15TW5007N	15TW5007S
50	8	15TW5008N	15TW5008S
70	5	15TW7005N	15TW7005S
80	6	15TW8006N	15TW8006S
80	7	15TW8007N	15TW8007S
80	8	15TW8008N	15TW8008S

Standard Wall

Standard Wall with
spiral reinforcement

Length (cm)	Diameter (mm)	Catalogue No.	Catalogue No.
20	6	15SW2006N	–
20	7	15SW2007N	–
40	5	15SW4005N	–
50	6	15SW5006N	15SW5006S
50	7	15SW5007N	15SW5007S
50	8	15SW5008N	15SW5008S
70	5	15SW7005N	–
80	6	–	15SW8006S
80	7	–	15SW8007S
80	8	–	15SW8008S

Quick and reliable delivery of standard products in Europe within 24 hours.

Call our central office: +49 (0) 7471 / 922-0

ARTIVION™

Learn more at [artivion.com](https://www.artivion.com)

All products and indications are not available/approved in all markets. All trademarks are owned by Artivion, Inc. or its subsidiaries. On-X Life Technologies, Inc. Jotec GmbH and Ascyrus Medical GmbH are wholly owned subsidiaries of Artivion, Inc. © 2022 Artivion, Inc. All rights reserved.

Artivion, Inc.

1655 Roberts Blvd., NW
Kennesaw, GA 30144 USA
Phone: +1-888-427-9654
Fax: +770-590-3753

E-mail: inquiries@artivion.com

For contact information by region, please visit. www.artivion.com/contact

 JOTEC GmbH, Lotzenäcker 23, 72379 Hechingen, Germany

JT-BR-0150200-EN V02 01/2023